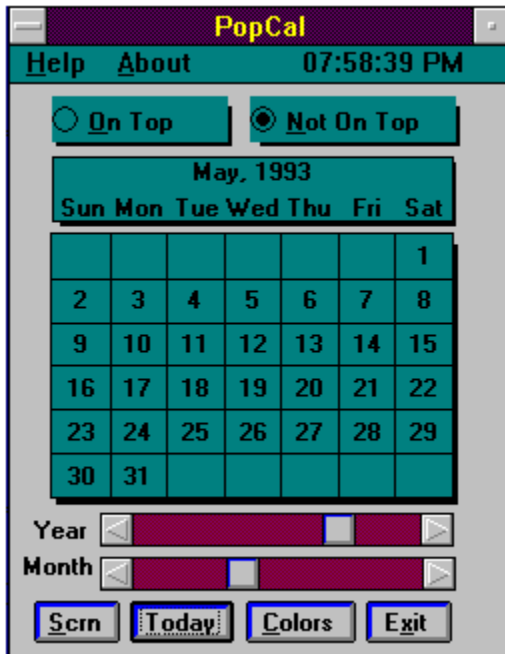


Main Screen - Click on any area for help and hints

[Click here to View Colors Help](#)



Shows this help screen - you did it already!

Displays the author and version number of **PopCal!**

Forces **PopCal** to stay on top and in view, regardless of which application(s) you are running. Should you want to hide PopCal, simple logic would suggest you click the **Not OnTop** option.

Allows other open applications to cover or hide **PopCal** while it is running.

Clicking on any date box displays the date in a message box (DateSelect). Serves no useful purpose until the next version of PopCal in which DateSelect will, in fact, become an essential program feature.

Scroll up or down (left or right) to select any year between 1753 and 2077. Keeping this in mind, scroll to a famous date in history (clicking on both the year and month selectors). When you've found the date, you'll also know the day of the week that date occurred. Hint: Clicking the outer end-arrows adjusts the date one year (or month) at a time. Dragging the inner selector with the mouse rapidly changes the year or month.

Scroll up or down (left or right) to select any month in the current year. Keeping this in mind, scroll to a famous date in history (clicking on both the year and month selectors). When you've found the date, you'll also know the day of the week that date occurred. Hint: Clicking the outer end-arrows adjusts the date one year (or month) at a time. Dragging the inner selector with the mouse rapidly changes the year or month.

Clicking Scrn starts the Windows Starfield Screensaver. We put this in because the clock in **PopCal** updates the screen every second, thus preventing some screensavers from working as they should on a normal timeout basis. If you don't have the Windows Starfield Screensaver installed, nothing will happen.

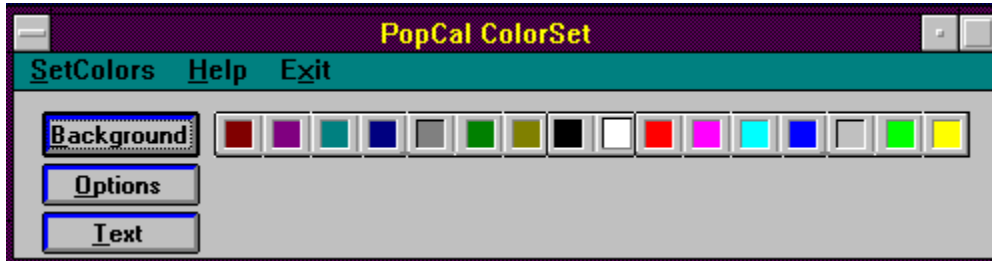
Clicking the Today button displays the current date, regardless of which month, year or century you've moved to.

Clicking on this button will display the **PopCal** Color Selection menu.

Allows you to exit this magnificent application - quickly, quietly and gracefully

Color Select Help Menu [View Main Screen Help](#)

Click on any area below for help and hints



Writes your choice of color combination to an initialization file. Next time you run **PopCal**, these colors will take effect.

Shows this help screen - you did it already!

Closes the Color Select menu but leaves **PopCal** running.

Changes **PopCal's** principal background color.

Click once on any of these colors to effect a change.

Changes **PopCal's** option button background colors.

Changes **PopCal's** option button and year/month text color.

